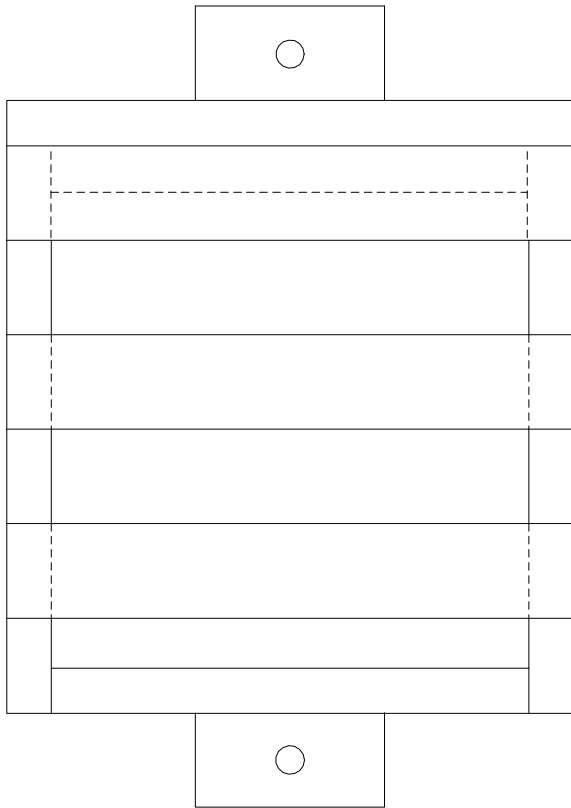
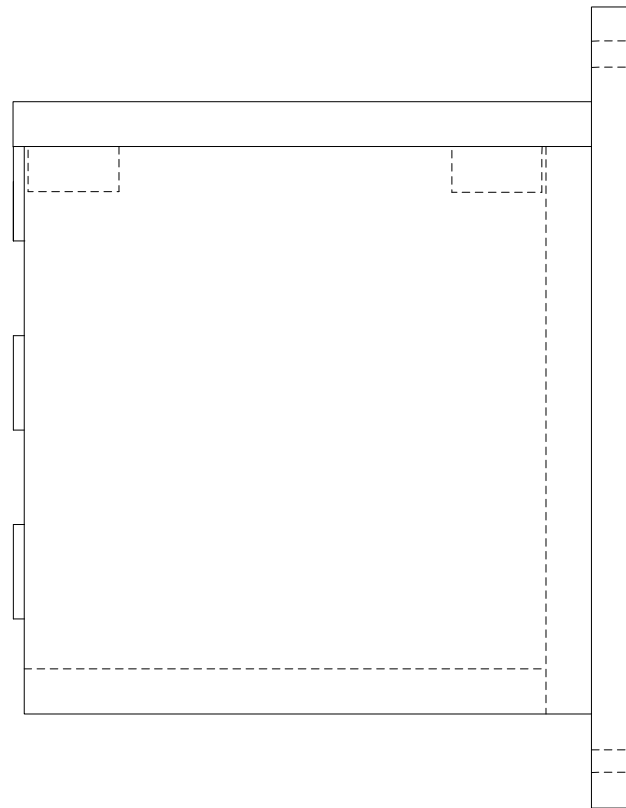


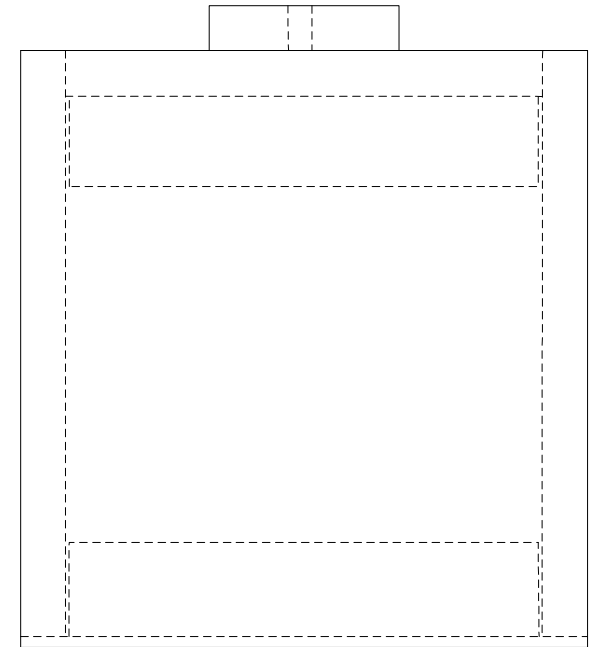
Insect Hibernation Box



Front View

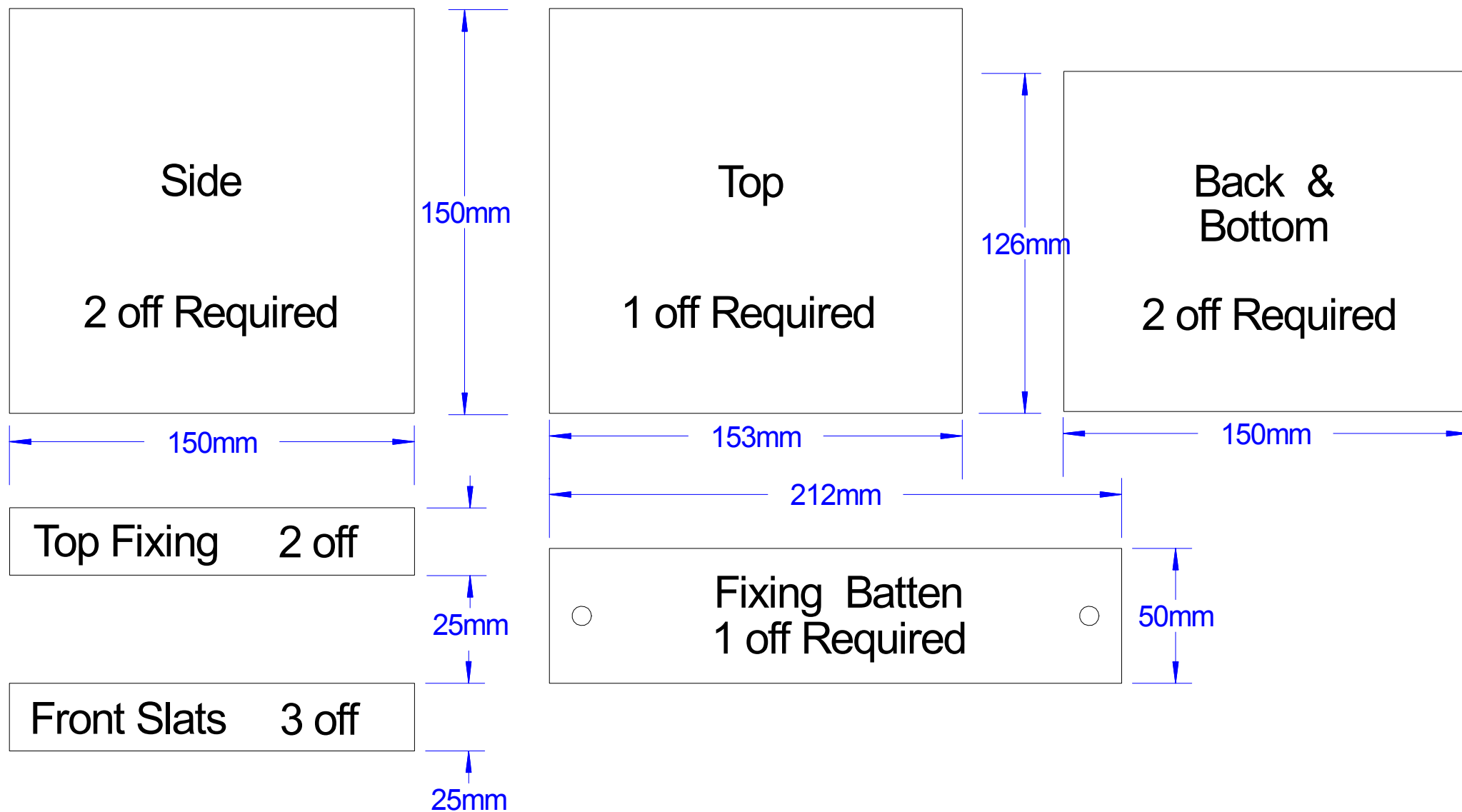


Side View



Plan View

The Insect Hibernation Box is a wooden box with a slatted front which allows air to circulate but stops the loose packing, amongst which the insects will hibernate, from falling out. The box can be made with a loose top, as shown in the drawings, so it can be removed and the box cleaned out in the summer. Alternatively nail the top on but attach the slats with brass screws so that they can be taken off to allow cleaning of the box. **Do not treat the wood with a wood preservative.** Fill the box with a loose mixture of dry leaves and straw. Attach the box by means of the batten on the back to a fence or post in the garden in early autumn. Take the box down in mid-November and put it in an unheated outhouse (garage or shed) to give the hibernating insects some protection against frost. In the spring put the box out in a sunny spot in the garden and the lacewings and ladybirds should emerge and fly off to find a mate and the larvae they produce will search out and destroy the greenfly in your garden.



All timber is 12mm thick except Front Slats which are 3mm thick.